

## Oxford Owl for School

**E-books are set that link to the phonics your child has been taught. These go alongside the book band books your child will receive in their book bags.**

How to access your e-books:

**Go to [oxfordowl.co.uk](http://oxfordowl.co.uk) and click 'Log In':**



**Select your 'user type':**

Make sure you are on 'Students' and then add your child's username and password. You will have this information in your child's reading record.

### Login

Please select your user type.



Students	Teachers	Parents
----------	----------	---------

Class or student username
<input type="text"/>
Password
<input type="password"/>
<input type="button" value="Login"/>
<a href="#">Help</a> <a href="#">Forgotten my login</a>

## Insert your code:

Following this, you will be asked for the school code. All this information is on a printed sheet in your child's book bag.

### Login

Please select your user type.



Students

Teachers

Parents

Please enter your school code.

School code

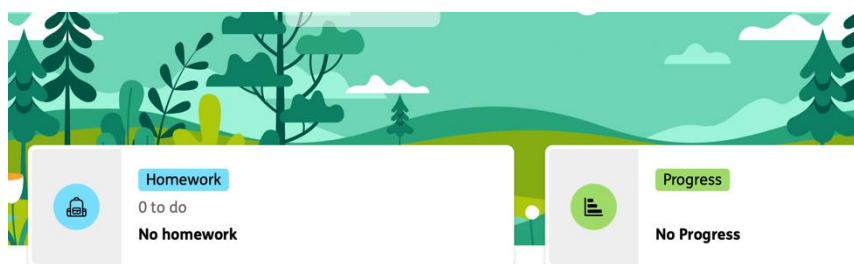
Login

[Help](#)

[Forgotten my login](#)

Once you have logged on you will see in the box at the top which books have been set and the progress made. The books in the 'homework' section are the books set that link to your child's phonics teaching. If it says 'No homework', then no books have been set.

Progress will be noted when books have been read.



If you ever wanted more books to read, please feel free to make use of the electronic libraries. It's always good to use the filter to get books at the same book band we assign from school.

Note: Do not click on 'I have read this e-book' if you plan on reading it again as it disappears from the homework area.

